

Monhegan Associates President's Newsletter, Spring 2021

To all members of the Monhegan Associates:

Well, spring is here. For some of us, after a long, shut-in winter and the hope of some respite from the effects of COVID19 because of the rollout of vaccines, it cannot get here fast enough. Others may be surprised that it's here so quickly. Either way, it's only a month or so before the more intrepid visitors will start arriving on Monhegan for birding, vacations, a needed break or perhaps for the season.

It's been a long year and some of you may not have even been able to visit last summer, but rest assured regardless of your personal situations, the wildlands owned by Monhegan Associates, Inc. (MAI) have not been sleeping, nor have a number of the Associates members, nor have the residents of the town. This newsletter is an attempt to bring everyone up to speed on a number of ongoing activities and projects in the MAI and on the island that affect or intersect with MAI in various ways.

Most of you will be receiving this as a link to be viewed on your electronic device of choice. This was deliberately crafted with internal links so you can quickly go to areas of specific interest to you, although the hope is that you will read all if it to stay in the know and understand how you can help be involved in what we are doing. There is no specific order to the topics below, so feel free to skip around as you please.

[Summer Meetings](#), [Summer Lecture Series](#), [Trails](#), [Policies](#), [Land Acquisitions](#), [Finance](#), [Volunteer Work](#), [Broadband Tower](#), [Wind Turbine](#)

Covid19 Update

While the wildlands do not care about COVID19, most of the rest of us do. The Monhegan Associates has no specific policy about this virus, but defers completely to the guidelines from the State of Maine and to the EMA policies governing Monhegan Island Plantation. Please plan your visits to the Island and the wildlands with respect for these guidelines, even if you have been vaccinated.

[Maine State Guidelines.](#)

[Monhegan Plantation Guidelines](#)

Most of the residents of the island have received a vaccination or an opportunity to do so. Many of you probably have already been vaccinated or your vaccination is in the works before arriving on the island, but the CDC is still warning us to use caution and follow recommended guidelines.

Summer Meetings

Because of the ongoing uncertainty with abatement of COVID19, the Island School has been deemed unavailable for any meetings this summer. The church board is discussing its options and the library is unknown. Given all this, the trustees have decided that the meetings this summer, as

well as the ecology lecture series, should all be virtual and will be held on ZOOM. It is possible that if the guidelines evolve to allow limited meetings that some of the meetings will be hybrid meetings with a small gathering of individuals and zoomed out to the rest who wish to attend.

Please stay tuned for details about these meetings sent out in email and also posted on the Monhegan associates web page on the [What's New](#) page.

Summer Lecture Series

The Summer Ecology Lecture Series will be offered virtually this summer. The dates and the lecture topics are listed below and the invitation to the meeting on line will be posted on the [MAI What's New](#) website page as the date approaches.

Nan Nelson and Candis Kerns did a fantastic job pulling these lectures together and wrestling through the detailed commitment of the lecturers to offer them virtually, something we were not quite ready to delve into last summer.

- **7/7/2021** [William Livingston](#) - Dr. Livingston hales from the University of Maine, where he has served as Associate Director for Undergraduate Education and Associate Professor of Forest Resources. He has been to the island before to survey our forest a number of years ago. At the moment, he plans to return in June to walk the forests and examine what is going on. It is my understanding that he will share what he finds for his talk and possibly link his observations to what he has seen earlier.
- **7/21/2021**- [Nathaniel Wheelwright](#) will talk about being a naturalist in the digital age. He has worked at Bowdoin College as a Professor of Natural Sciences in the Bowdoin Biology department. He is also the author, along with Bernd Heinrich, of [The Naturalist's Notebook](#).
- **8/4/2021** - [Whitney King](#) is a faculty member of Colby College. he has conducted research on [Allen Island](#) and will be discussing that work. Allen Island is one of the George's Islands that you pass on the right on our way down from Port Clyde on the Monhegan boatline.
- **8/18/2021** - [Sarah Redmonds](#) the founder of [Springtide Seaweed](#) which is devoted to seaweed aquaculture. Her company grows organic seaweed as well as consults on seaweed farming technology and products.

Policy updates

Part of the ongoing work of the Associates in solidifying our understanding of the stewardship of the Monhegan Wildlands, is to actually codify policies that are reviewed and approved by the MAI board of trustees. The stewardship of the land is complicated and also fragmented into different topics that can be dealt with in these smaller bites.

To do this, we have broken down the overall plan into localized topics and are tackling them in teams, that then present a policy to the trustees for a vote. Once voted on, these individual policies are posted on the website on our [Land Use Policies page](#) where they can be read by anyone.

In the policies, we include a simple statement of the policy, the scope of what it does and does not cover, definitions of words used in the policy, internal references of other MAI associated documentation, external references to research that was done in formulating the policy, and a rationale for why the policy is important. At the top is the date of the vote and the vote tally as well as the principal authors of the policy. (some of the early policies do not include as much as we learned as we did more writing)

The goal is to be as transparent as possible about how we govern the land and also to encourage more interaction by the greater Monhegan communities. The policies constitute our best effort at this time in setting forth ways to preserve the natural state and natural wild beauty of Monhegan's wildlands, limiting human intervention as much as possible. As people see ways to better achieve this goal, these policies may be amended by vote of the trustees.

In addition to what is already in place on the [webpage](#), the following policies are in various states of preparation to be voted on this summer.

Trail use Policy (Pedestrian Only)

- Since its founding in 1954, Monhegan Associates' policy has been to allow only foot traffic along its trails, with the sole exception (on designated "fire trails") allowing the passage of emergency wheeled vehicles. This policy puts in one document decisions made over the years by the board of trustees.

Fire Policy for the wildlands

- We have a prohibition on fire in the wildlands, but this policy is about practices of the Associates that are aimed at mitigating the risk of fire spread in the woods and also addresses how the Associates should establish good practices on its boundaries with other private land, particularly where it comes close to structures on other private property.

Human Participation Policy

- The human population of Monhegan, winter and summer are arguably part of the ecology of the wildlands. This policy will aim to define the boundary lines for what is acceptable interaction of humans with the wild lands. Obviously hiking, picnicking, taking photographs, foraging for wild berries or mushrooms seem to be well understood, but there are other activities that might be allowed specifically so that people know they are free to participate. This is a complex issue and emotionally challenging, but we are starting work on outlining what this might look like.

Scientific Research Policy

- From time to time, we are approached by individuals or institutions that want to do scientific research on our lands, whether this is taking plant samples, tracking biodiversity and evolution etc. This policy provides a framework for evaluating such requests professionally and granting or denying permission for such work.

In addition, I am including a list of policies that still need attention. If you are interested in working on any of these policies, please contact [Frederick Faller](#)

- Waterbars and other erosion control systems
- Use of Power tools in the Wildlands and trails
- Technical Rock Climbing
- Trail Relocation - when and how
- Invasive Plant Management
- Natural Debris Removal from the Wildlands
- Boundary Marking of Associates' Property.
- Monitoring and Recording of records of Monhegan Wildlands.
- Beaver and Muskrat Policy

Land Acquisitions

Though it seems that we have acquired nearly all the available land outside the village, we keep finding small fragments of land tucked into the wildlands that are privately owned. Within the last couple weeks we were approached by a woman who has been paying taxes on a small plot on "Prospect Hill" for years and wants to donate it to the MAI.

Within the last year we have finalized the transfer of the Hardwood Hill (north of the ice pond) into the MAI land collection by a generous donation by Charlie Hudson. We also acquired a small landlocked parcel near deadman's cove.

This is all part of the ongoing work and purpose of MAI to close these deals and finalize the integrity of the wildlands in perpetuity. If you are aware of any privately owned parcels, within the wildlands that are not owned by MAI, please let us know.

Trails

The Trails committee has met several times over the winter to talk about the trails and trail maintenance in the wildlands. Last summer, a number of traditional activities on the trails were altered or did not happen because of the impact of the COVID19 virus. Weekly trails maintenance meetings did not happen with regularity but were replaced when individual efforts or small groups that formed at times to work on specific areas.

Adopt a Trail

A number of the trails are being maintained by “adopt a trail” volunteers who select a particular trail or portion of it and take on the responsibility as an individual, a small group or family to maintain their selected portion. My family has been maintaining trail #5 (gull pond trail) from Horn’s hill to the back side for about five years. We use the [Trails Maintenance Policy](#) as our guidelines and I and my three siblings and the extended family make sure that one trail is well kept.

Any heavy work, like building bog bridges, stepping stones, erosion control or re-routing of a trail is done by the fall trail crew and would not be your responsibility. You would just be clearing undergrowth and overgrowth of the trail.

If you are interested in adopting a trail for yearly maintenance, please contact [Rick Cameron](#), [Ian Leavesly](#), or [Rebecca FitzPatrick](#) to talk about helping out in this way.

Weekly Trail Work Volunteers

This summer, we will be resurrecting the weekly Trail Work Sessions. The meetings will happen on **Wednesday mornings at 9:00**, starting from the tool shed at the back of the meadow. The trails committee decided that while working on the trails, it will be easy to keep the social distancing guidelines as people spread out to work with tools etc, but, at least for the initial meeting at the shed, masks will still be required.

These sessions include quick training on the guidelines, a brief hike to the designated trails for work and then a couple hours of actual work.

If you have never done this, be assured that it is not difficult work and you are helping to support the work of the Associates in one of the main and most visible way - our trails - as well as meet others with similar interests. If you have questions, please contact [Rebecca FitzPatrick](#).

Brief update on Forestry Management crew projects this Fall:

Most of the heavy work on our trails (clearing deadfalls, building or improving bog bridges and stepping stones, clearing new portions of trails, etc.) is done off season by a professional crew trained in this kind of work. This work is coordinated by Rebecca FitzPatrick, our "Wildlands Coordinator".

In the fall of 2020, this trails crew worked on several significant portions of trails that needs special attention:

Fall crew projects included improving trail conditions for emergency responders by widening narrow sections of the Cliff trail (#1) from the Lobster Cove area to the Underhill trail (#3). They also addressed a few chronically wet trail areas by adding stepping stones on the Cliff Trail near the Swamp trail (#12) junction and building new bog bridges on the Cliff trail just past Christmas Cove. (Just a reminder: trail bridges, stepping stones and dealing with wet areas on trails are governed by our [bridging policy](#))



In the spring of 2021, the entrance to the trail to Whitehead from the ball field behind the lighthouse, was moved south by a few yards and the old trail was blocked off because of the project to bring broadband access to the island that requires the installation of another communications tower on lighthouse hill ([see below](#)) As part of this effort, the trail to Whitehead was altered to accommodate a required “fall zone” around the location of the tower. The alteration is slight and is only for the first hundred yards of the trail. Below is a picture showing the new location of the trail head.

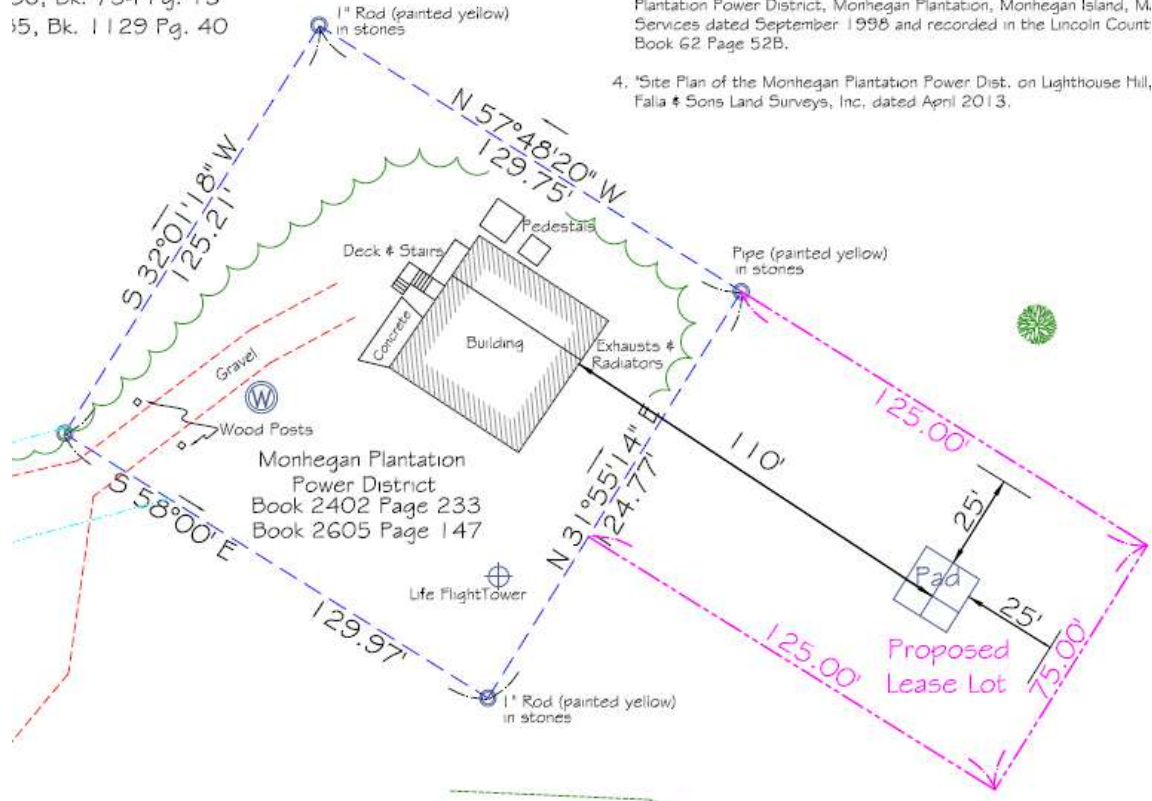




50, Bk. 734 Pg. 13
55, Bk. 1129 Pg. 40

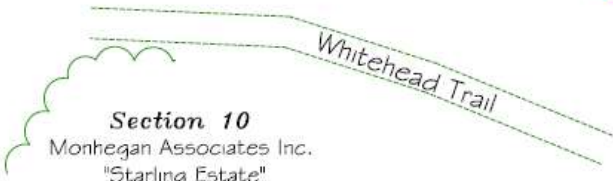
Plan References

1. 'Lots North of Lighthouse, Monhegan, Maine' by E.S. Vose dated Jul Lincoln County Registry of Deeds in Plan Book 2 Page 111A.
2. 'Monhegan Island L/S, Plot Plan' by U.S. Coast Guard, First District, Engineering, dated December 13, 1951.
3. 'Standard Boundary Survey of Proposed Lease by Monhegan Association Power District, Monhegan Plantation, Monhegan Island, M. Services dated September 1996 and recorded in the Lincoln County Book 62 Page 52B.
4. 'Site Plan of the Monhegan Plantation Power Dist. on Lighthouse Hill, Falia & Sons Land Surveys, Inc. dated April 2013.



od Stake

"Ballfield"



Bk. 507 Pg. 321, Bk. 633 Pg. 380, Bk. 734 Pg. 13
Bk. 736 Pg. 140, Bk. 786 Pg. 85, Bk. 1129 Pg. 40



Falia & Sons
207
Phone: (207) 833-0000
www.faliasurveying.com

Site	
Moni	
on Lighthou:	
DRAWN	M.
DRAWN	Ms
APPROVED	xxx
APPROVED	
SCALE	1"
SHEET	1

Financial Update

Fundraising Working Group

At the annual meeting last summer (2020) the trustees came to consensus that it was time to look seriously at fundraising for the Associates to supplement the on-island activities that we have hosted in the past in the summer (such as gala events, house tours etc.). To this end, \$5,000 was added to the budget to start a fundraising effort to increase the MAI endowment to help in securing the future of the organization. Through the winter a team of people led by Glenn Burdick have been meeting to discuss ideas on how this might happen.

The goal is to increase the investment "endowment" of the organization to a level where our current activities could be sustained in perpetuity without having to dip into the principal too much. Many people do not realize that our current operating budget to keep the wildlands accessible is about \$70,000 per year. While favorable investment results and your continued generosity have enabled our endowment to reach about \$500k currently, substantial work remains to reach our goal.

The fundraising working group is forming ideas that will be presented and discussed with the Trustees, officers and others to increase this endowment. We are not ready to roll out details, but we will keep you informed of progress.

Covid19 Grant Money

This past year, because of quick thinking on the part of Glenn Burdick when the pandemic set in in earnest, we were able to apply for financial assistance from the Federal Paycheck Protection Program to help support our Wildlands Coordinator, Rebecca Fitzpatrick. We were given a loan of \$4800. Because we used this money to pay salary, it was fully forgiven, effectively making it a grant to help sustain our employees during the pandemic.

Summer Intern

Because of the COVID summer last year, we did not hire an intern. This summer we will not be hiring an intern, but will be adding a few more hours to Rebecca FitzPatrick's summer hour work instead. This seems like a reasonable direction given how well integrated Rebecca is in the function of the organization. James Carney, who is working on his degree in Wildlife and Conservation Biology at the Ohio University, has volunteered to do an unpaid internship for the summer. He will be helping out with daily functions of MAI through the summer.

Contributions

Of course, we are always in need of contributions to our efforts. If you can help us out there are several ways to do this as noted on the web page at <https://monheganassociates.org/make-a-donation/>

Volunteer Work - How you can help!

If you plan to spend time on the island this summer and would like to get involved there are several ways to contribute your time. Help is needed:

- Clearing the trails, with weekly trail work crews on Wednesday mornings (see above)
- Working with non-native invasive plants in the wildlands: Contact [Rebecca FitzPatrick](#)
- Join the “[Adopt a Trail](#)” program if you are a regular summer person who can work on a particular part of our trails regularly each summer.
- Get involved in helping us write [Policies for MAI’s oversight of the wildlands](#).

Keep an eye on the Rope Shed and our MAI cart (across from the Monhegan Store) for more information about our weekly work meet-ups and Adopt-A-Trail program or contact our Wildlands Coordinator at: volunteer@monheganassociates.org. or visit our website at <https://monheganassociates.org/volunteer/>

Broadband tower update

The Monhegan Plantation is moving forward rapidly with the implementation of broadband access for the Island. This will be a significant upgrade in a world that demands ever faster and better internet access for the businesses, residents and visitors to the island. Several points of interest and how it affects the Associates:

- A new communications tower is being installed about 110 feet east of the power station in the woods on lighthouse hill. This tower is being installed on Monhegan Associates property that has been leased to the plantation for this purpose.
- Construction of the tower and site will be ongoing throughout the summer with possible rollout of the service sometime in the fall or winter.
- The tower will be about 100 ft. tall and will be set back in the woods.
- Every effort is being made to minimize visible access to the tower to keep it as visually unobtrusive as possible.
- At this time, it seems that a light at the top of the tower will NOT be required.
- After locating the tower sight and doing most of the site survey work, we were informed that a 110ft “fall zone” around the tower was required for safety. A small portion of the Whitehead trail crossed through this fall zone so the trail was jogged around the fall zone. This work was done this spring by the trail crew at the expense of the tower budget - (no cost to the Associates)([see above](#))

Wind turbine update

New England Aqua Ventus will be installing a single offshore turbine in the waters south of Monhegan

Although the experimental floating wind turbine will be located about 2.5 miles south of the island and out of the jurisdiction of the Associates, I thought a short update might be helpful:

- Lots of details information is available at the [New England Aqua Ventus website](#)
- There will be a single turbine 2.5 miles south of Monhegan in Maine state waters
- None of the infrastructure related to the turbine or its cable to the mainland will touch Monhegan Island proper or Manana.
- The cable will pass south of the island and make landfall in or near Boothbay
- This spring and summer there will be [survey ships](#) moving back and forth between the site and Boothbay doing assays and bottom topographic surveys. This will probably be visible frequently to the southwest of the island.
- It is likely that this turbine will be placed at its intended location sometime in the summer of 2022.

It's been a busy winter and we are all anticipating a busy summer of 2021 on the island and we look forward to a return to a more normal summer, to whatever extent possible.

Frederick W.Faller, President, Monhegan Associates, Inc.